

JS-20 Scan Head

JoeScan

3-D Vision Profiling

Scanning for the Long Haul

Discover the JS-20

The JoeScan JS-20 Scan Head delivers fast, accurate readings over an easy-to-use Ethernet interface. It's a winning combination of reliability, performance and ease of use. No wonder so many sawmills and systems integrators use JoeScan.

Easy to use: The JS-20 installs in minutes. It requires only 24V DC power and an Ethernet connection, and there's no need for the air-conditioned racks of custom computer and interface electronics. The calibration procedure for JS-20 scan heads is the most intuitive and flexible in the industry.

Reliable: The JS-20 is designed for the most challenging industrial environments. Our scan heads even withstand the extreme vibration of riding on the headrig carriage, and the aluminum housing is fully sealed to keep out dust and moisture. With no moving parts, the JS-20 is designed to deliver years of unflinching service.

Unmatched support: JoeScan products are backed by a 5-year warranty. If you encounter a manufacturing defect within 5 years, we will fix it at no charge. In addition, every JoeScan product is covered by our guaranteed 10-year support policy.

JoeScan can help

We will work with a mill's preferred optimization vendor to help put together a scanning and optimization system to meet the application's specific needs and requirements. JoeScan can also refer customers to optimization vendors who have specific experience providing proven optimization systems that utilize JS-20 sensors for any given application. Give us a call today, or visit us online.

JS-20 Snapshot

- Image View for easy troubleshooting
- Rugged, fully sealed aluminum housing
- Ethernet communication
- One-click calibration
- 5-year warranty
- 10-year support life guarantee



What our customers say:

"Our 24-head snapshot scanner has been running great since 2003. Even with nine heads riding on the carriage for Surround Scanning, we've had no problems with the JS-20 scan heads."

– Mark Hecker, Operations Manager
Buse Timber and Sales

"I have worked with many scanners built by many different vendors, and none has been even close to being as rugged and reliable as the JoeScan JS-20."

– Robert Cecil, Engineer
Nelson Brothers Engineering

"The JoeScan scanner is one of the simplest and easiest to work with that I've ever used, and I've used systems costing tens of thousands more."

– Phil Loder
Timber Automation & Control

JS-20 Scan Head

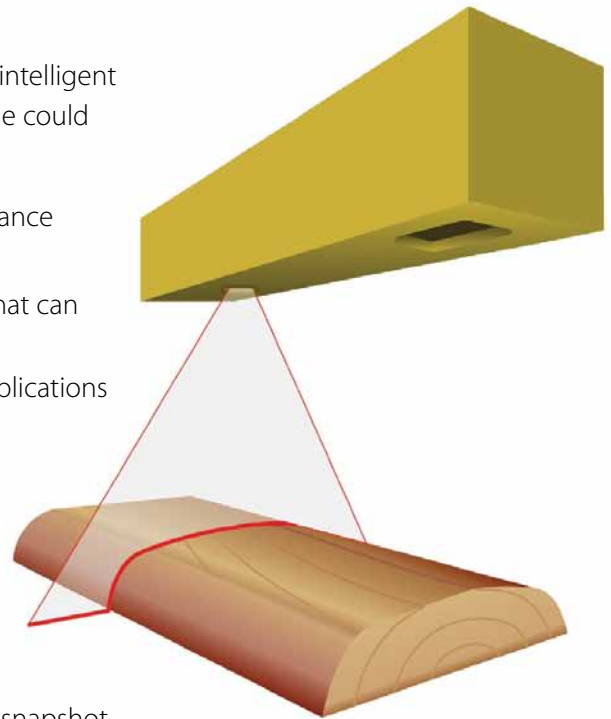
**Simple Operation +
Proven Reliability =
Impressive ROI**

Cutting-edge technology

JoeScan started in 1999 with one idea in mind: Design and create intelligent sensors using open industry standards – precision products anyone could operate easily right off the shelf.

The result: the powerful JS-20 Scan Head. And we continue to enhance and expand our product line. We now offer seven JS-20 models:

- **JS-20 MX (medium range):** A versatile scanning envelope that can handle anything from boards to medium-to-large logs
- **JS-20 MX100oe (mid-range outdoor edition):** Outdoor applications using lineally scanned bucking or merchandising optimizers
- **JS-20 SX (standard range):** Lineal scanning of boards, cants and small to medium-size logs
- **JS-20 WX (wide angle):** Transverse scanning of boards and cants
- **JS-20 X1 (extended range):** One laser; lineal scanning of large logs
- **JS-20 X2 (dual laser):** 12-inch laser spacing for high-density snapshot and short-infeed scanning
- **JS-20 X3 (triple laser):** 6-inch laser spacing for higher-density snapshot and short-infeed scanning



As our customers' needs change, we keep pace with product advancements that continue to improve recovery.



Specifications

	JS-20 MX 100oe	JS-20 SX	JS-20 WX	JS-20 X1	JS-20 X2	JS-20 X3
Max Resolution	+/- 0.025"	+/- 0.025"	+/- 0.025"	+/- 0.030"	+/- 0.030"	+/- 0.030"
Placement Flexibility	1 laser	1 laser	1 laser	1 laser	2 lasers 12" apart	3 lasers 6" apart
Max Scan Rate	138 to 276/sec.	275/sec.	650/sec.	275/sec.	135/sec. per laser	90/sec. per laser
Depth of View	20" to 84"	20" to 60"	24" to 48"	3' to over 13'	3' to 8'	3' to 8'
Field of View	26" @ 54"	30" @ 60"	42" @ 48"	60" @ 120"	48" @ 96"	48" @ 96"

To learn more, visit www.joescan.com or call **360-993-0069**.

JoeScan